

Observers on every large purse-seine vessel record whether there were any dolphins killed or hurt in each fishing operation.

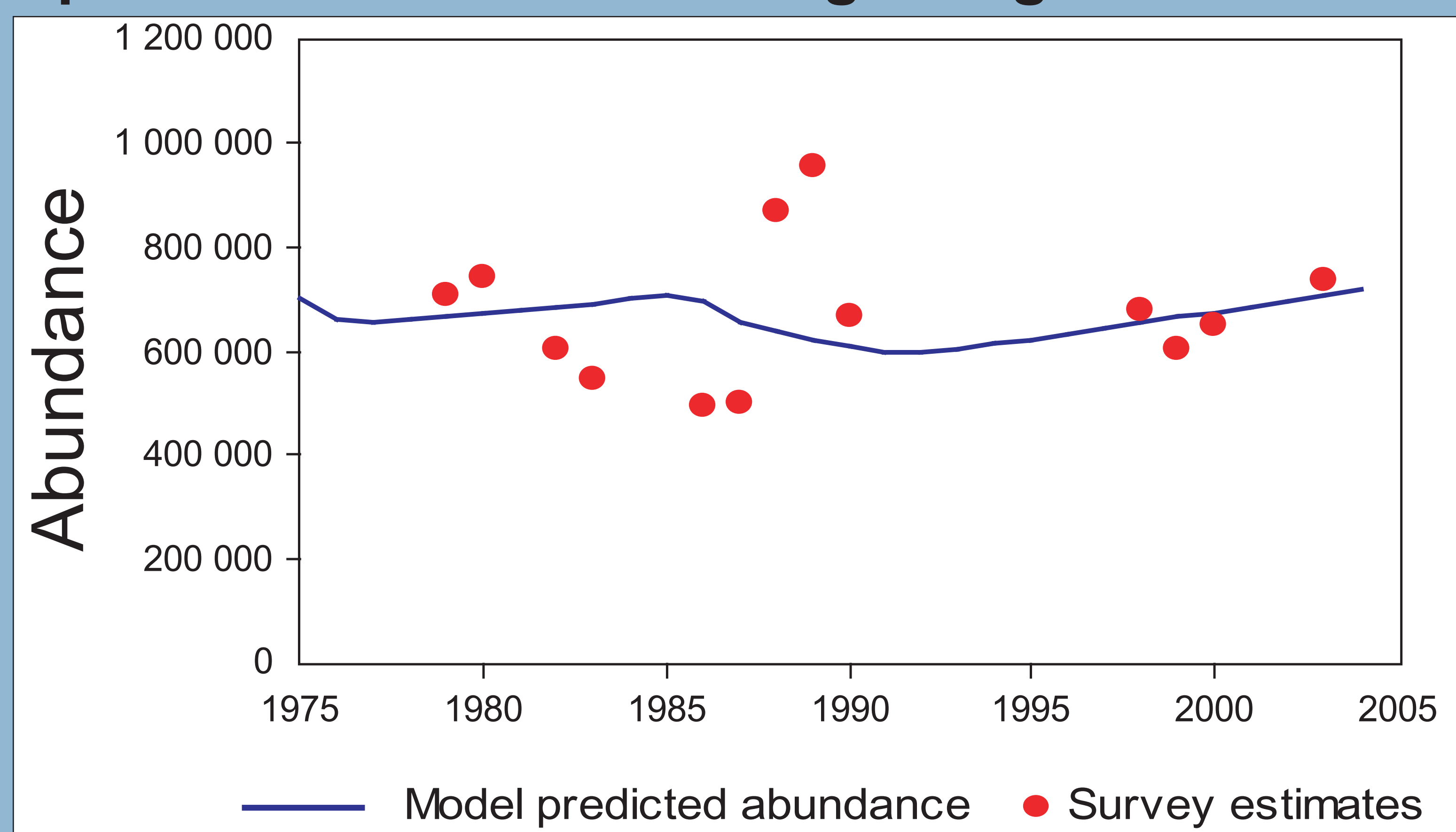
Non-Governmental Organization, industry and science cooperation~Transparency

Management based on international cooperation

Year	Dolphin mortality limit	Individual vessel limit
1993	19,500	183
1994	15,500	127
1995	12,000	114
1996	9,000	96
1997	7,500	94
1998	6,500	66
1999	< 5,000	40
2000	< 5,000	45
2001	< 5,000	60
2002	< 5,000	54
2003	< 5,000	54
2004	< 5,000	54

Dolphin stock	Population abundance 1986-1990	Incidental mortality (2004)	% mortality
Northeastern spotted	730,900	250	0.03%
Western/Southern spotted	1,298,400	248	0.02%
Eastern spinner	631,800	220	0.03%
Whitebelly spinner	1,019,300	214	0.02%
Northern common	476,300	159	0.03%
Central common	406,100	100	0.02%
Southern common	2,210,900	222	<0.01%
Other dolphins	2,802,300	56	<0.01%
All	9,576,000	1,469	0.015%

Population stabilized and beginning to recover



Product labeling

In most sets on dolphin-associated tuna (94%), no dolphins are killed or injured, and the tuna can be labeled as dolphin safe. Dolphin safe tuna is stored separately from other tuna. Governments monitor dolphin safe tuna after it is unloaded and may provide a dolphin safe certificate for tuna which meets the definition.

Programa Internacional para la Conservación de los Delfines – International Dolphin Conservation Program
Registro de Seguimiento de Atún (Registro A) – Tuna Tracking Form (Form A)

Para atún capturado en lances sin mortalidad ni heridas graves a delfines
 For tuna caught in sets without mortality or severe injury of dolphins

Bodegas - Wells: B: Babor - Port; E: Estribor - Starboard; C: Crujía - Center
 Fechas en formato AA-MM-DD - Dates in YY-MM-DD format

Número RSA TTF Number

Fecha lance	Hora	Bodega	TONELAJE CARGADO (TM)	TONNAGE LOADED (MT)	Iniciales - Initials	Com?				
Set date	Time	Well	YFT	SKJ	BET	OTR - OTH	TOTAL	OBS.	I.M. C.E.	✓=SI- Yes

Product labeling



Certificate No. 3401

AIDCP Dolphin Safe Tuna Certificate

This document certifies that the tuna or tuna products associated with it, and with the Tuna Tracking Forms (TTFs) indicated herein, were harvested by a vessel of a Party to the Agreement on the International Dolphin Conservation Program (AIDCP), meet the dolphin safe standards established pursuant to the AIDCP, and may bear the AIDCP Dolphin Safe Certification Mark. For verification of this certification, or for information on the AIDCP, contact the AIDCP Secretariat, c/o Inter-American Tropical Tuna Commission, 8604 La Jolla Shore Drive, La Jolla CA 92037-1508, USA; Tel: 858 546 7100; Fax: 858 546 7133; www.iattc.org; or by e-mail to dsafemaster@iattc.org.

See instructions on reverse

A. Whole frozen weight:		
Number of TTF	Weight (all tunas)	
1.		MT
2.		MT
3.		MT
4.		MT
5.		MT
6.		MT
7.		MT
8.		MT
9.		MT
10.		MT
Total:		MT

B. Primary processing and total weight of the tuna associated with this certificate:		
Primary processing type	Weight:	
		MT
		MT
Lot number:		

C. Certification by AIDCP Competent National Authority:
 The competent national authority authorizes the bearer of this Certificate to utilize the AIDCP Dolphin Safe Certification Mark on this packing of any product containing tuna specifically associated with this Certificate.

Signature: _____

Name: _____

Agency: _____

Date (day-month-year): _____

SEAL or STAMP